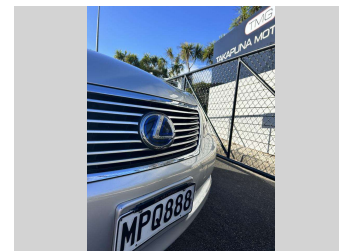
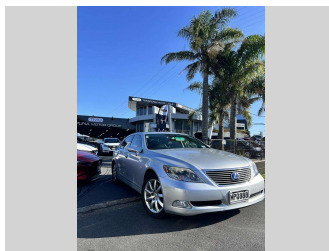
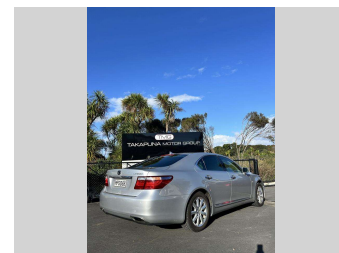
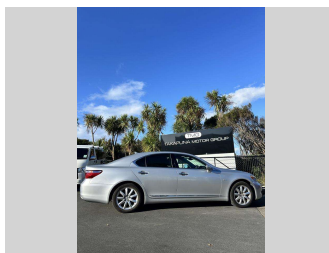



# 2008 Lexus LS600h




**Purchase Price** **\$12,845**  
Includes GST, Registration & Licensing

Finance may be available on this vehicle. Ask one of our friendly staff for more information.



Gain peace of mind with Mechanical Breakdown Insurance. **Ask us how.**



**Top features**

None Listed

Body Style  
**Sedan**

Odometer  
**128,000 km**

Engine  
**4960 cc**

Fuel Type  
**HYBRID(PETROL)**

Transmission  
**Automatic**

Wheels  
-

VIN  
-

Interior  
**Black**

Safety



Based on 2023 VSRR rating

Reg No.  
**MPQ888**

Ext Colour  
**Silver**

History  
-

Seats  
**Leather**

CO2 Emissions  
**★ ★ ★ ☆ ☆ ☆**  
**219 grams/km**

Energy Economy  
**★ ☆ ☆ ☆ ☆ ☆**

**Annual fuel cost of \$3,680**  
**9.4L per 100km**

Cost per year is an estimate based on petrol price of \$2.80 per litre and an average distance of 14000 km. Emissions and Energy Economy figures standardised to 3P WLTP.

**Stock ID: 46259**



Takapuna Motor Group | Phone 09 580 2081 | Email  
auckland@takapunamotorgroup.co.nz  
87 Barrys Point Road, Takapuna, Auckland 0622, New Zealand  
www.takapunamotorgroup.co.nz

