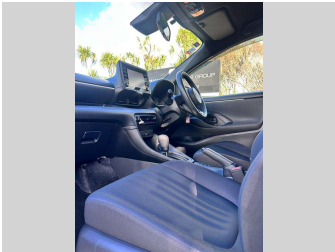
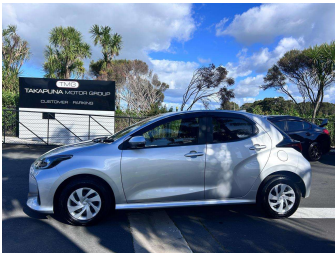


2021 Toyota Yaris Hybrid X



Purchase Price

Includes GST
Excludes on-road costs of \$895

\$20,995

Indicative repayments

\$237.49 per week*

Based on a 60 fortnight term & no deposit.
Total repayments (120) = \$28,498.47

Gain peace of mind with
Mechanical Breakdown
Insurance. **Ask us how.**

Top features

- » 360 CAMERA
- » Adaptive Cruise Control
- » Apple CarPlay
- » Electric Windows
- » Power Windows
- » Reverse Camera

Body Style	Reg No.
Hatch Back	-
Odometer	Ext Colour
66,031 km	Silver
Engine	History
1490 cc	-
Fuel Type	Seats
Petrol	-
Transmission	CO2 Emissions
CVT	-
Wheels	Energy Economy
-	-
VIN	-
-	-
Interior	
Black	
Safety	
-	
Stock ID: 46603	

* Takapuna Motor Group is not a lender nor a financial adviser. Any amounts displayed should not be seen as an offer of finance or taken as financial advice. The interest rate, fees and loan term used in this calculation may not actually represent those available from lenders. Actual interest rates, fees and loan terms will vary per lender and are typically based on an assessment of your credit risk and responsible lending criteria. Any repayment amounts displayed are indicative only and have been calculated using several other indicative inputs. The interest rate used in this calculation is an arbitrary 10.25%, however exact interest rates vary per lender. The term of the loan used in this calculation is 60 fortnight. Exact terms available vary per lender although options typically include 6, 12, 18, 24, 36, 48 and 60 months. This calculation also includes two typical mandatory fees charged by lenders. These are an account admin fee of \$120.00 per month (other payment frequencies may be available) and a one-off establishment fee of \$490.35. Typically, this fee can be paid upfront or, as in this calculation, be capitalised over the contract term, ie. included in the loan amount. These fees can vary per lender and other non-mandatory fees and charges may also apply. The total amount of repayments has been calculated by multiplying 120 weekly repayments (based on a 60 fortnight term) by the weekly repayment amount of \$237.49 which equals \$28,498.47. This calculator does not consider any of your own personal circumstances and we strongly suggest you seek budgeting advice prior to committing to any loan contract. Responsible lending criteria and lender terms and conditions will likely apply to any finalised loan contract. Proof of security and/or vehicle insurance may also be required before proceeding.