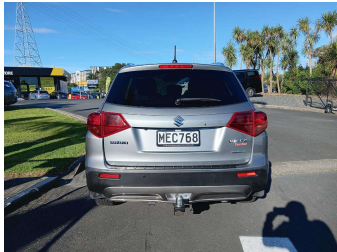
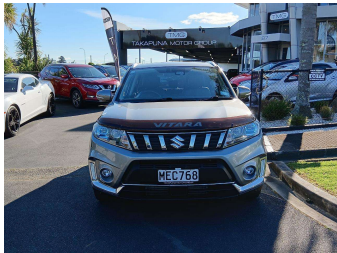


2019 Suzuki Vitara TURBO 1.4PT/4WD/6AT



Purchase Price

Includes GST, Registration & Licensing

\$20,885

Indicative repayments

\$86.61 per week*

Based on a 60 month term & 20% deposit.
Total repayments (260) = **\$26,695.13**



Gain peace of mind with
Mechanical Breakdown
Insurance. **Ask us how.**



Top features

- » Air Conditioning
- » Alloys
- » Android Auto
- » Apple CarPlay
- » AWD
- » Blindspot monitor
- » Bluetooth Hands Free
- » Cruise Control
- » Electric Mirrors
- » Electric Mirrors
- » Heated Steering Wheel
- » NZ Navigation maps
- » Parking Sensors
- » Push Start Button
- » Remote Locking
- » Reversing Camera
- » Tow Bar
- » Turbo

Body Style

5 door, Wagon

Odometer

84,500 km

Engine

1373 cc, Internal Combustion

Fuel Type

Petrol

Transmission

Automatic, 4WD

Wheels

-

VIN

TSMLYEA1S00647272

Interior

Black

Safety



Based on 2024 UCSR rating
for 15-22 models

Reg No.

MEC768

Ext Colour

Grey

History

NZ New, 3 owners

Seats

5 seats

CO2 Emissions

★★★★☆

161 grams/km

Energy Economy

★★☆☆☆☆

**Annual fuel cost of \$2,700
6.9L per 100km**

Cost per year is an estimate based
on petrol price of \$2.80 per litre and
an average distance of 14000 km.
Emissions and Energy Economy
figures standardised to 3P WLTP.

Stock ID: 46645

TMG

TAKAPUNA MOTOR GROUP

Takapuna Motor Group | Phone 09 580 2081 | Email
auckland@takapunamotorgroup.co.nz
87 Barrys Point Road, Takapuna, Auckland 0622, New Zealand
www.takapunamotorgroup.co.nz



4.58 | 102 reviews

* Takapuna Motor Group is not a lender nor a financial adviser. Any amounts displayed should not be seen as an offer of finance or taken as financial advice. The interest rate, fees and loan term used in this calculation may not actually represent those available from lenders. Actual interest rates, fees and loan terms will vary per lender and are typically based on an assessment of your credit risk and responsible lending criteria. Any repayment amounts displayed are indicative only and have been calculated using several other indicative inputs. The interest rate used in this calculation is an arbitrary 9.75%, however exact interest rates vary per lender. The term of the loan used in this calculation is 60 months. Exact terms available vary per lender although options typically include 6, 12, 18, 24, 36, 48 and 60 months. This calculation also includes two typical mandatory fees charged by lenders. These are an account admin fee of \$12.00 per month (other payment frequencies may be available) and a one-off establishment fee of \$490.35. Typically, this fee can be paid upfront or, as in this calculation, be capitalised over the contract term, ie. included in the loan amount. These fees can vary per lender and other non-mandatory fees and charges may also apply. The total amount of repayments has been calculated by multiplying 260 weekly repayments (based on a 60 month term) by the weekly repayment amount of \$86.61 which equals \$26,695.13. This calculator does not consider any of your own personal circumstances and we strongly suggest you seek budgeting advice prior to committing to any loan contract. Responsible lending criteria and lender terms and conditions will likely apply to any finalised loan contract. Proof of security and/or vehicle insurance may also be required before proceeding.

Vehicle data updated 24 August 2025 15:57